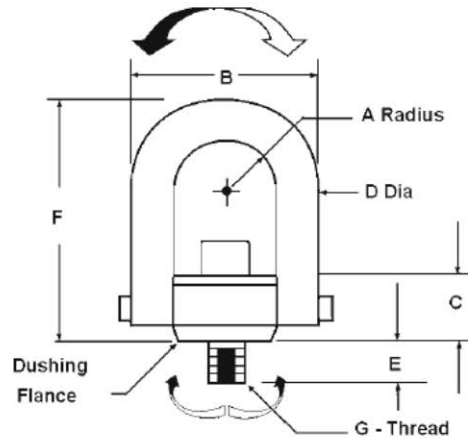
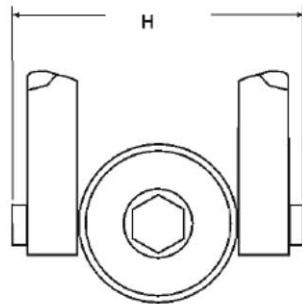




FEATURES

- Pivot 180° and Swivel 360° when lifting heavy, unbalanced loads.
- Replaces conventional out moded lifting devices.
- Prevents accidents caused when eyebolts break or lifting hooks disengage.
- Made of high quality alloy steel.

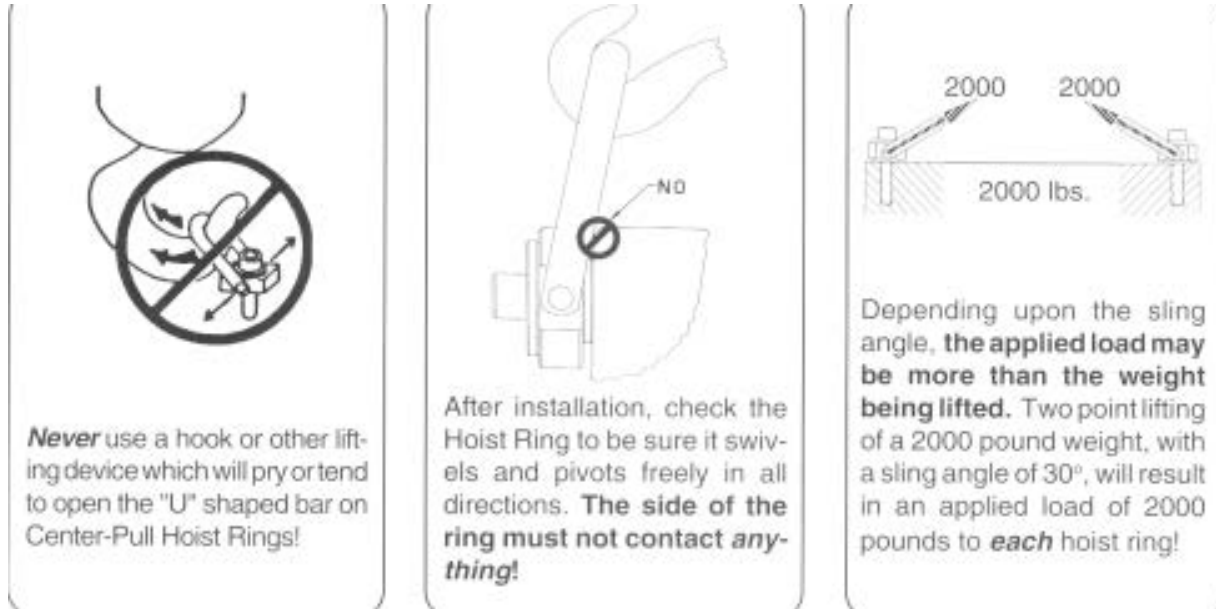


G Size	Capacity In Tons	B mm	C mm	D mm	E mm	F mm	H mm	Coarse Pitch
M12	1.0	50	26	12	28	90	55	1.75
M16	1.9	74	30.5	16	25	128	74	2.0
M20	3.0	92	62	20	33	156	99	2.5
M24	4.5	127	53	25	38	190	130	3.0
M30	7.0	159	56	32	46	229	162	3.5
M36	8.5	175	70	35	60	290	184	4.0
M42	11.0	180	72	40	50	330	192	4.5
M48	13.0	204	85	45	80	350	210	5.0
M56	25.0	220	95	49	80	390	227	5.5
M64	22.0	260	110	56	120	430	270	6.0

Note:

- Dimensions Given Above Are All Approximate And Are Subject To Change Without Notice Since All These Products Are Under Constant Research And Development.
- Dimension (E) I.E. Thread Length May Vary As Per Client Requirement.

EEK Swivel Hoist Ring



Safety Information

DO NOT APPLY A LOAD GREATER than the rated capacity indicated on the Swivel Hoist Ring.

Do not use spacers between the bushing flange and the work piece mounting hole.

Never use a hook or lifting device that is too large to fit the Swivel Hoist ring.

Depending upon the sling angle, the applied load may be more than the weight of the work piece being lifted. The less the sling angle, the more the applied load (refer above drawing).

After installation, make sure that the Swivel Hoist Ring swivels and pivots in all direction. On side lift, the side of the Swivel Hoist must not contact the work piece.

When lifting the work piece, gradually apply force. DO NOT APPLY SHOCK LOADS. If a shock load should occur, DO NOT USE THE SWIVEL EYEBOLT.

Loosening of the Swivel Hoist Ring may occur during use. Periodically re-tighten the Swivel Hoist Ring onto the work piece,

WARNING:

The EEK Swivel Hoist Ring components are not interchangeable with other lifting devices. Attempted substitution of parts may result in product failure and possible injury.